

Pesticides on Pinnacle® DB Aqueous C18 (LC/MS/MS, ESI-)

Peak List:

Compound	Polarity	Mol. Wt.	RT (min.)	Transition 1
bentazone	negative	240.28	0.77	239.0 @ 131.8
bromoxynil	negative	276.91	1.32	275.9 @ 80.8
loxynil	negative	370.92	2.46	369.8 @ 126.7
fludioxinil	negative	248.19	5.34	247.0 @ 179.9
boscalid	negative	343.21	5.36	343.0 @ 307
prothioconazole	negative	344.26	5.41	341.9 @ 305.8
fipronil	negative	437.15	5.56	434.9 @ 329.8
noviflumuron	negative	529.1	7.08	527.1 @ 343.8

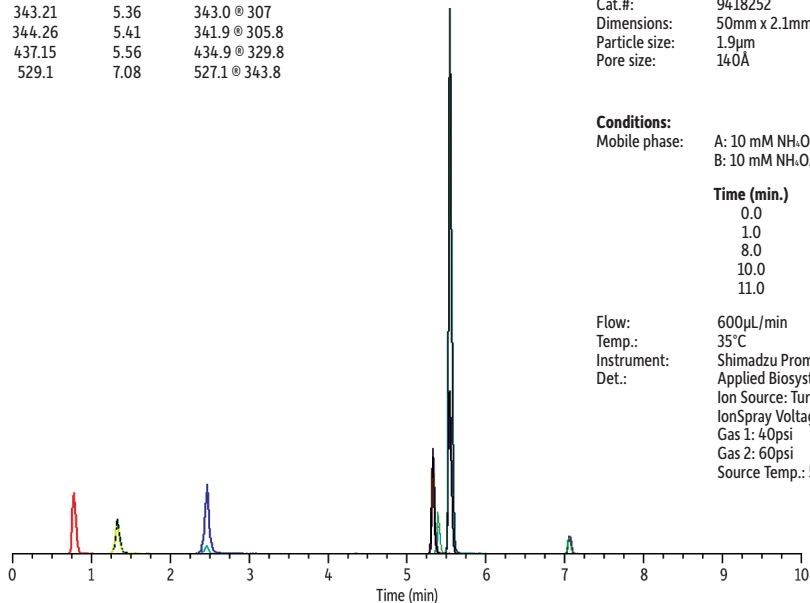
Sample: multicomponent pesticide standard
Inj.: 5µL
Conc.: 33.3ppb each pesticide
Sample diluent: acetonitrile

Column: Pinnacle® DB Aqueous C18
Cat.#: 9418252
Dimensions: 50mm x 2.1mm
Particle size: 1.9µm
Pore size: 140Å

Conditions:
Mobile phase: A: 10 mM NH₄OAc in water
 B: 10 mM NH₄OAc in methanol

Time (min.)	%B
0.0	10
1.0	10
8.0	90
10.0	90
11.0	10

Flow: 600µL/min
Temp.: 35°C
Instrument: Shimadzu Prominence® UFLCXR
Det.: Applied Biosystems 4000 QTRAP® LC/MS/MS system
 Ion Source: TurbolonSpray®, ESI-
 IonSpray Voltage, ESI voltage: -4.2kV (ESI-)
 Gas 1: 40psi
 Gas 2: 60psi
 Source Temp.: 500°C; max pressure ~7,200psi



LC_FF0479B