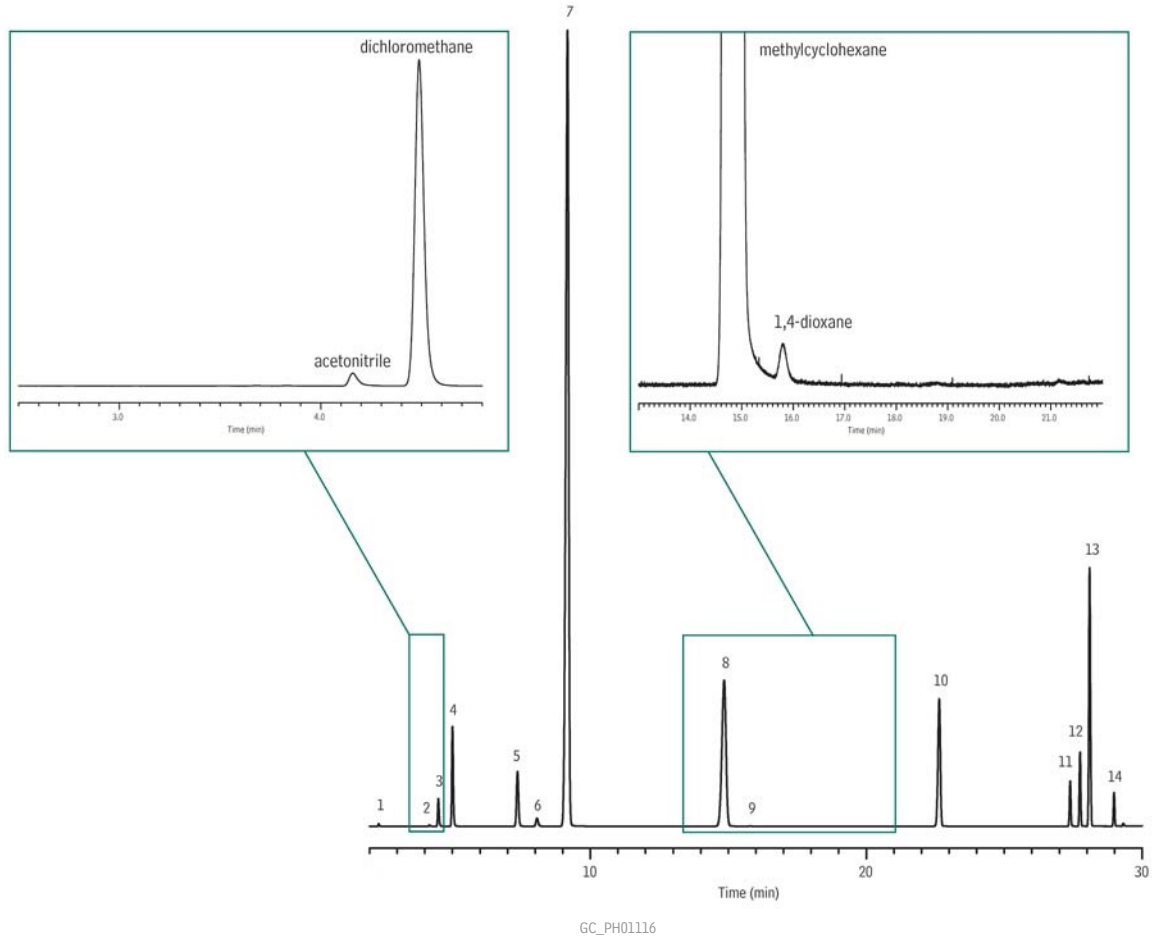


Residual Solvents
Rxi®-624Sil MS

1. methanol
2. acetonitrile
3. dichloromethane
4. *trans*-1,2-dichloroethene
5. *cis*-1,2-dichloroethene
6. tetrahydrofuran
7. cyclohexane
8. methylcyclohexane
9. 1,4-dioxane
10. toluene
11. chlorobenzene
12. ethyl benzene
13. *m*-xylene / *p*-xylene
14. *o*-xylene



Column: Rxi®-624Sil MS, 30m, 0.32mm ID, 1.8µm (cat.# 13870)
 Sample: 20µL Residual Solvents Class 2 Mix A Stock Solution (cat.# 36271) in 6mL water in a 20mL headspace vial (Concentration not consistent with USP <467> methodology)
 Inj.: 1.0mL manual headspace injection, split (3:1), 1mm split liner (cat.# 20972)
 Inj. temp.: 140°C
 Carrier gas: helium, constant flow
 Flow rate: 2.2mL/min.
 Oven temp.: 40°C (hold 20 min.) to 240°C @ 10°C/min. (hold 20 min.)
 Det: FID @ 250°C
 Hydrogen: 40mL/min.
 Air: 450mL/min.
 Makeup: 45mL/min.
 Instrument: Agilent 6890