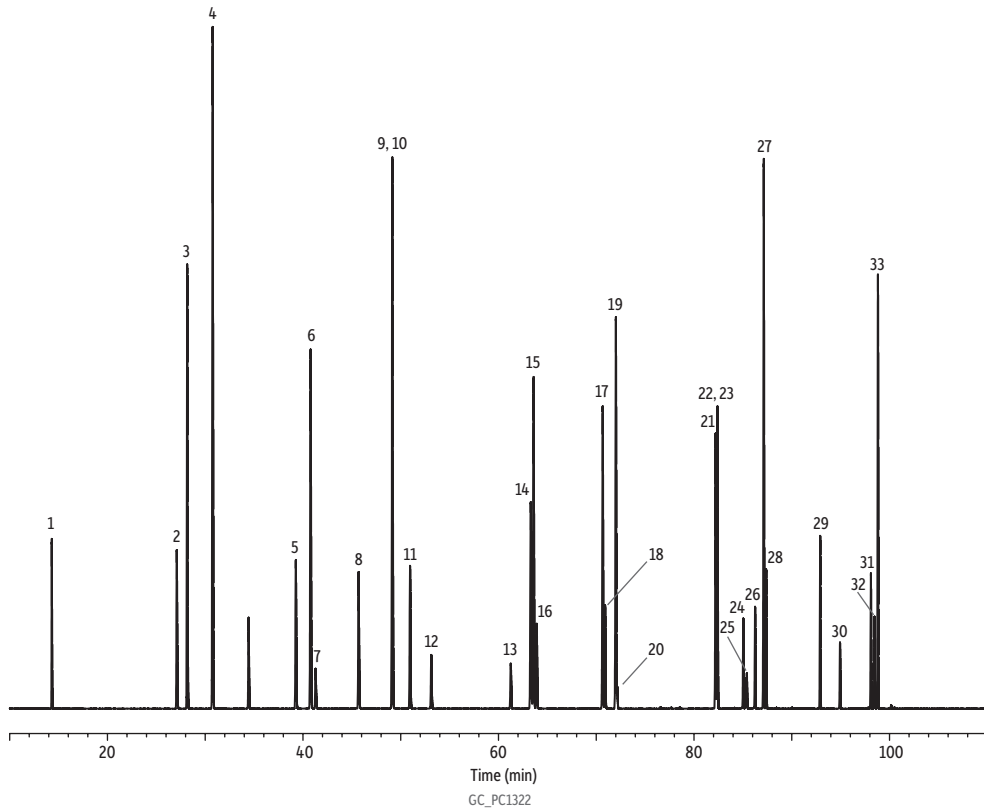


Isoparaffins on Rtx-DHA-100 (ASTM D6729-14)



Peaks	tr (min)	Conc. (wt.%)	Peaks	tr (min)	Conc. (wt.%)
1. Isopentane	14.305	1.599	17. 2-Methylheptane	70.672	4.731
2. 2,3-Dimethylbutane	27.091	2.352	18. 4-Methylheptane	70.917	1.508
3. 2-Methylpentane	28.160	6.377	19. 3-Methylheptane	72.016	5.909
4. 3-Methylpentane	30.764	10.517	20. 3-Ethylhexane	72.162	0.307
5. 2,2-Dimethylpentane	39.279	2.438	21. 2,5-Dimethylheptane	82.217	3.860
6. 2,4-Dimethylpentane	40.792	5.931	22. 3,5-Dimethylheptane	82.414	2.344
7. 2,2,3-Trimethylbutane	41.299	0.660	23. 3,3-Dimethylheptane	82.414	1.765
8. 3,3-Dimethylpentane	45.700	2.305	24. 2,3-Dimethylheptane	85.052	1.160
9. 2-Methylhexane	49.157	4.689	25. 3,4-Dimethylheptane	85.413	0.839
10. 2,3-Dimethylpentane	49.157	4.689	26. 2-Methyloctane	86.259	1.289
11. 3-Methylhexane	50.963	2.374	27. 3-Methyloctane	87.147	6.995
12. 3-Ethylpentane	53.135	0.882	28. 3,3-Diethylpentane	87.394	1.914
13. 2,2-Dimethylhexane	61.266	0.786	29. 2,2-Dimethyloctane	92.916	2.098
14. 2,2,3-Trimethylpentane	63.310	3.673	30. 3,3-Dimethyloctane	94.944	0.804
15. 2,5-Dimethylhexane	63.602	5.854	31. 2-Methylnonane	98.104	1.582
16. 2,4-Dimethylhexane	63.921	1.454	32. 3-Ethyloctane	98.477	1.068
			33. 3-Methylnonane	98.823	5.272

Column Rtx-DHA-100, 100 m, 0.25 mm ID, 0.50 μ m (cat.# 10148)
Sample DHA isoparaffins standard (cat.# 30726)
Injection
 Inj. Vol.: 0.2 μ L split (split ratio 200:1)
 Liner: Topaz 4.0 mm ID Precision inlet liner w/wool (cat.# 23305)
 Inj. Temp.: 250 °C
Oven
 Oven Temp.: 0 °C (hold 15 min) to 50 °C at 1 °C/min to 130 °C at 2 °C/min to 270 °C at 4 °C/min
Carrier Gas He, constant pressure
 Linear Velocity: 24 cm/sec @ 35 °C
Detector FID @ 300 °C
Make-up Gas
 Flow Rate: 30 mL/min
Make-up Gas
 Type: N₂
 Hydrogen flow: 40 mL/min
 Air flow: 370 mL/min
Instrument Agilent 7890A GC