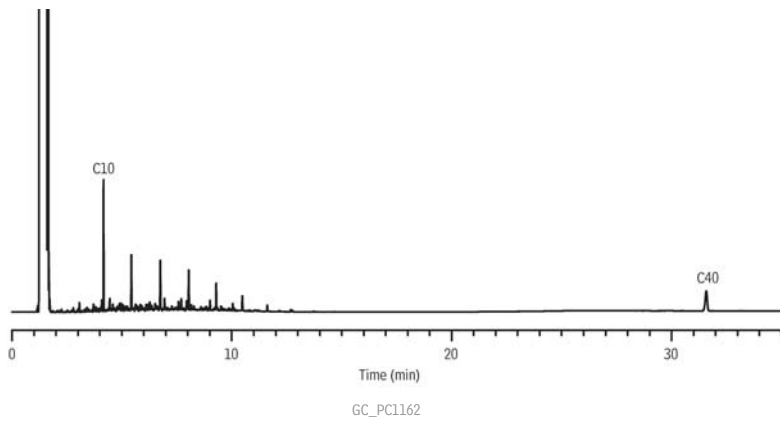


Kerosene on Rxi®-5HT



Column Rxi®-5HT, 30 m, 0.32 mm ID, 0.25 μ m (cat.# 13924)
using Rxi® guard column 2 m, 0.53 mm ID (cat.# 10054)

Sample kerosene composite (cat.# 31094)

Diluent: methylene chloride

Conc.: 500 μ g/mL spiked with C10 & C40

Injection

Inj. Vol.: 1 μ L cold on-column

Temp. Program: 53°C to 300°C at 10°C/min. (hold 20 min.)

Oven

Oven Temp: 50 °C to 300 °C at 10 °C/min. (hold 20 min.)

Carrier Gas H₂, constant flow

Linear Velocity: 40 cm/sec. @ 50 °C

Dead Time: 1.25 min. @ 50 °C

Detector FID @ 330 °C

Make-up Gas

Flow Rate: 30 mL/min.

Make-up Gas Type: N₂

Data Rate: 20 Hz

Instrument Agilent/HP6890 GC