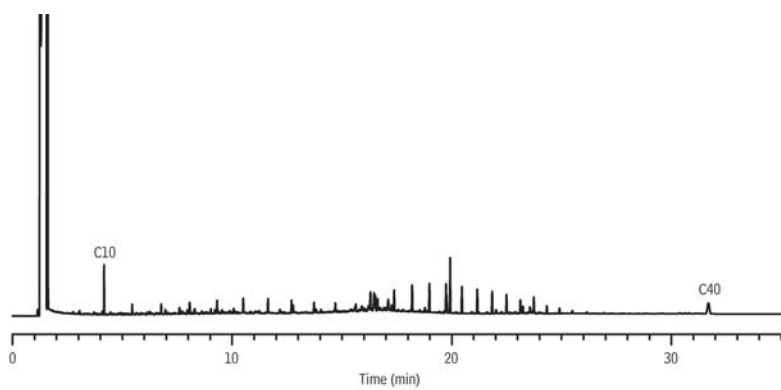


## Diesel on Rxi®-5HT



GC\_PC1160

**Column** Rxi®-5HT, 30 m, 0.32 mm ID, 0.25  $\mu$ m (cat.# 13924)  
using Rxi® guard column 2 m, 0.53 mm ID (cat.# 10054)

**Sample** diesel fuel #2 composite (cat.# 31258)

**Diluent:** methylene chloride

**Conc.:** 50,000  $\mu$ g/mL diluted to 500 ppm and spiked with C10 & C40

**Injection**

**Inj. Vol.:** 1  $\mu$ L cold on-column

**Temp. Program:** 53°C to 300°C at 10°C/min. (hold 20 min.)

**Oven**

**Oven Temp:** 50 °C to 300 °C at 10 °C/min. (hold 20 min.)

**Carrier Gas** H<sub>2</sub>, constant flow

**Linear Velocity:** 40 cm/sec. @ 50 °C

**Dead Time:** 1.25 min. @ 50 °C

**Detector** FID @ 330 °C

**Make-up Gas**

**Flow Rate:** 30 mL/min.

**Make-up**

**Gas Type:** N<sub>2</sub>

**Data Rate:** 20 Hz

**Instrument** Agilent/HP6890 GC