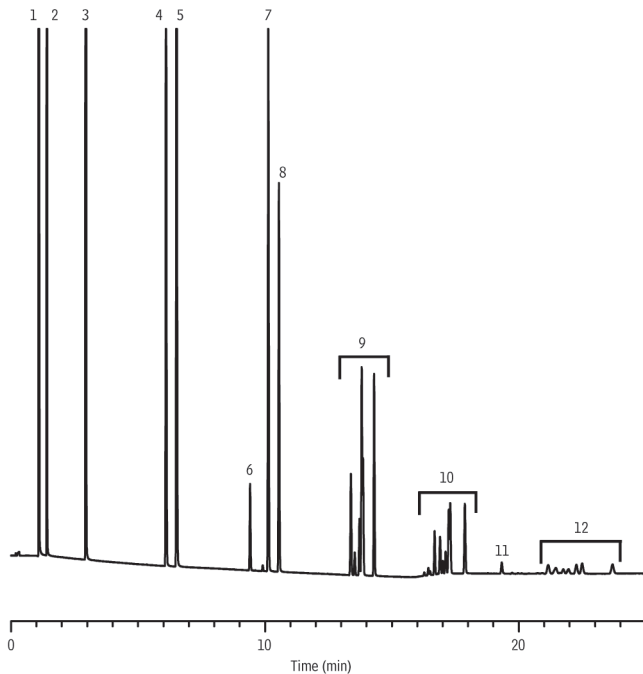


Natural Gas on Rt®-Alumina BOND/KCl (PLOT)



GC_PC01091

- Peaks**
1. Methane
 2. Ethane
 3. Propane
 4. Isobutane
 5. *n*-Butane
 6. neo-Pentane
 7. iso-Pentane
 8. *n*-Pentane
 9. Hexane isomers
 10. Heptane isomers
 11. Benzene
 12. Octane isomers

Column Rt®-Alumina BOND/KCl, 50 m, 0.53 mm ID, 10 µm (cat.# 19760)
Sample natural gas
Injection
Inj. Vol.: 500 µL split
Liner: 2.0 mm ID Single Gooseneck (cat.# 20795)
Inj. Temp.: 200 °C
Split Vent Flow Rate: 50 mL/min.
Oven
Oven Temp: 45 °C (hold 1 min.) to 200 °C at 10 °C/min. (hold 8.5 min.)
Carrier Gas H₂, constant pressure (8.0 psi, 55.2 kPa)
Linear Velocity: 45 cm/sec. @ 45 °C
Detector FID @ 200 °C
Make-up Gas Type: N₂
Data Rate: 20 Hz
Instrument HP5890 GC