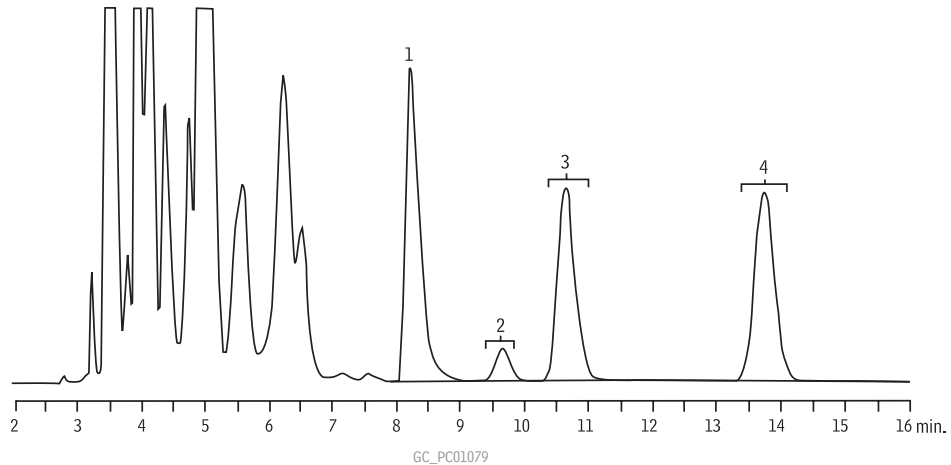


Gasoline ASTM D3606-06 Modified



1. ethanol
2. benzene
3. 2-butanol
4. toluene

Column: D3606 Application Column (2 column set, cat.# 83606-800)
Column 1: nonpolar Rtx[®]-1, 6' (1.8m), 1/8" OD, 2.0mm ID
Column 2: proprietary packing material, 16' (4.9m), 1/8" OD, 2.0mm ID

Sample: 1.5µL gasoline
Inj.: 200°C
Backflush: ~1 minute
Carrier gas: helium, constant flow
Flow rate: 25mL/min.
Oven temp.: 135°C, isothermal
Det.: TCD @ 200°C

Chromatogram courtesy of Boguslaw Dudek, Conoco Phillips, Linden, NJ.