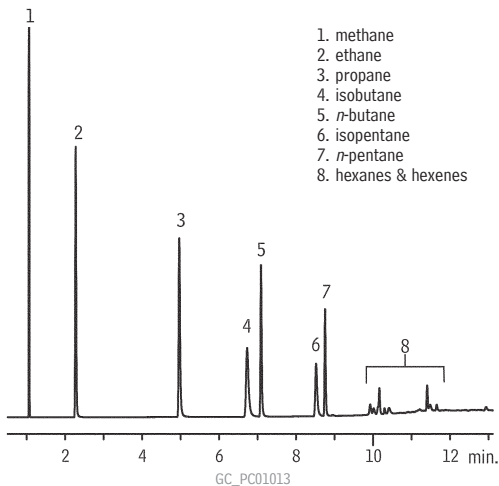


Natural Gas #2

Rt®-QS-BOND



Column: Rt®-QS-BOND, 30m, 0.53mm ID (cat.# 19738)
Sample: natural gas mix (mole%)
Inj.: 20 μ L split (split ratio 10:1), 4mm Siltek® single
goose-neck liner (cat.# 20798-214.1)
Inj. temp.: 240°C
Carrier gas: helium, constant flow
Flow rate: 5.7mL/min. @ 40°C
Oven temp.: 40°C (hold 2 min.) to 225°C @ 20°C/min. (hold 5 min.)
Det.: FID @ 240°C