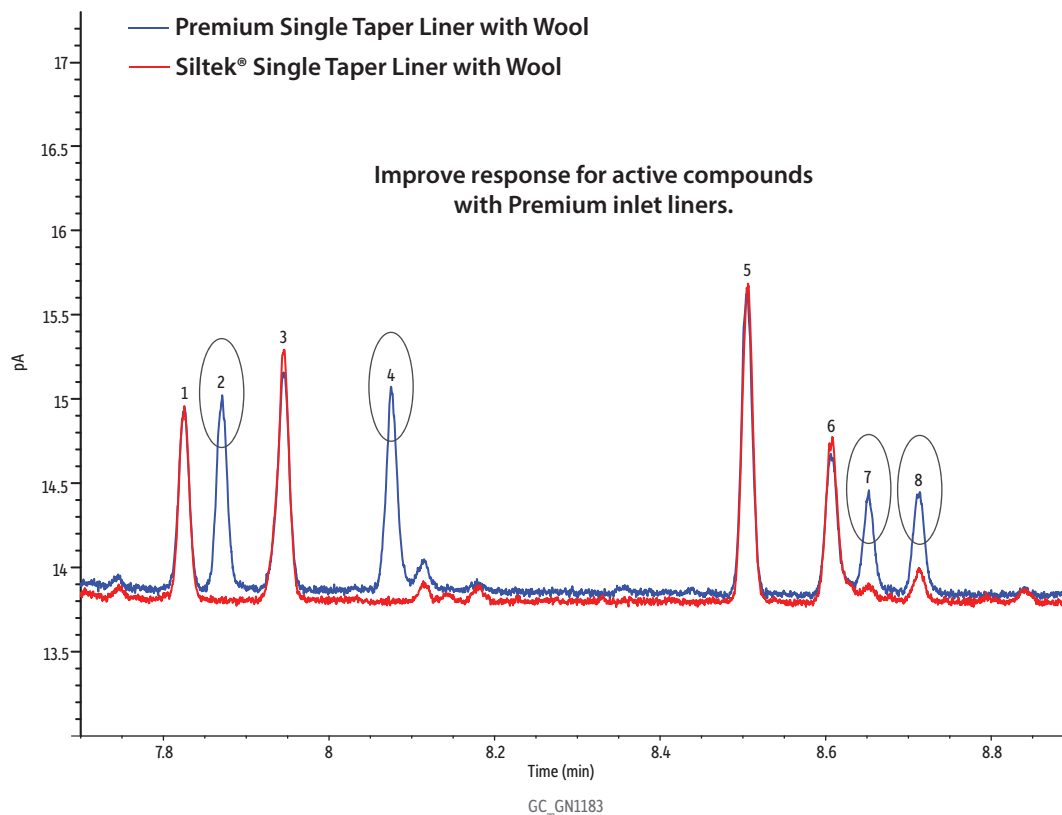


Comparison of Low-Level Pesticide Responses Using Premium vs. Siltek® Inlet Liners, Part I (QuEChERS Performance Standard C on Rxi®-5ms)

- Peaks**
1. Vinclozoline
 2. Carbaryl
 3. Metalaxyl
 4. Methiocarb
 5. Cyprodinil
 6. Thiabendazole
 7. Captan
 8. Folpet



Column	Rxi®-5ms, 15 m, 0.25 mm ID, 0.25 µm (cat.# 13420)
Sample	QuEChERS performance standard C (cat.# 31155)
Diluent:	Toluene
Conc.:	100 pg/µL
Injection	
Inj. Vol.:	1 µL splitless (hold 1 min)
Liner:	Comparison of low-level pesticide responses using Premium single taper with wool (cat.# 23303.5) and Siltek® single taper with wool (cat.# 22406-213.5)
Inj. Temp.:	250 °C
Purge Flow:	40 mL/min
Oven	
Oven Temp.:	70 °C (hold 1 min) to 330 °C at 21 °C/min (hold 1.5 min)
Carrier Gas	He, constant flow
Flow Rate:	1.5 mL/min
Detector	FID @ 340 °C
Make-up Gas	
Flow Rate:	45 mL/min
Make-up Gas	
Type:	N ₂
Hydrogen flow:	40 mL/min
Air flow:	400 mL/min
Data Rate:	50 Hz
Instrument	Agilent 7890A GC