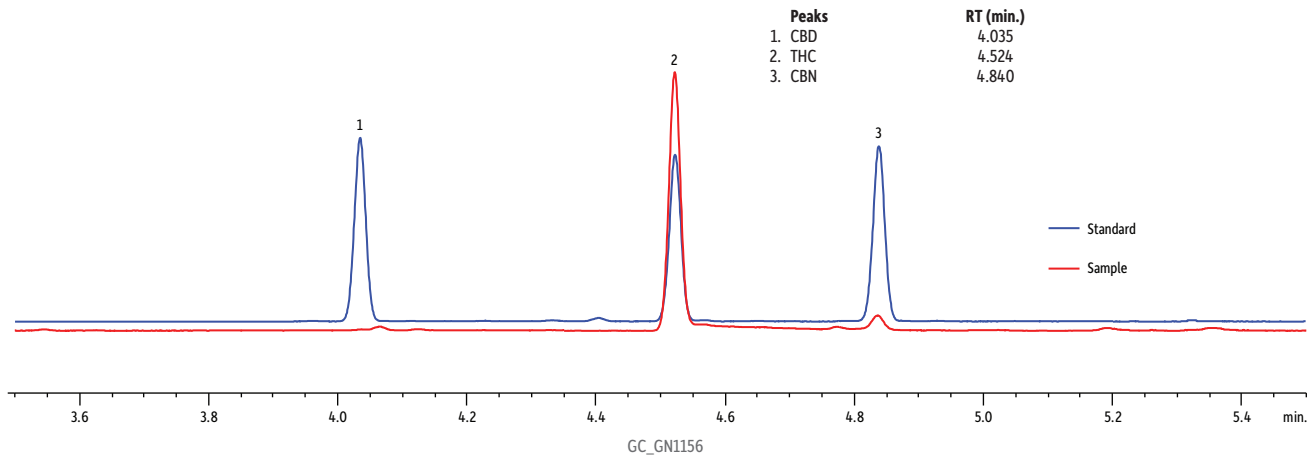


GC Potency Analysis for Marijuana on Rxi®-5Sil MS



Column Rxi®-5Sil MS, 15 m, 0.25 mm ID, 0.25 µm (cat.# 13620)
Sample Cannabinoids standard (cat.# 34014)
Injection 1 µL split (split ratio 20:1)
 Inj. Vol.: Premium 4.0 mm ID single taper inlet liner w/wool
 Liner: (cat.# 23303.5)
 Inj. Temp.: 250 °C
Oven 200 °C (hold 0 min.) to 300 °C at 15 °C/min. (hold 0 min.)
Oven Temp: 200 °C (hold 0 min.) to 300 °C at 15 °C/min. (hold 0 min.)
Carrier Gas H2, constant pressure (7 psi, 48.3 kPa)
 Temp.: 200 °C
 Dead Time: 0.6 min. @ 200 °C

Detector FID @ 300 °C
 Make-up Gas
 Flow Rate: 45 mL/min.
 Make-up Gas Type: N2
Instrument HP5890 GC
Note Blue trace = cannabinoids standard (cat.# 34014), 1mg/mL
 Red trace = extracted marijuana sample
 Sample extraction: Weigh 0.2 g of sample into a 40 mL VOA vial, add 40 mL of isopropanol, shake for 5 minutes, and allow sample to settle.