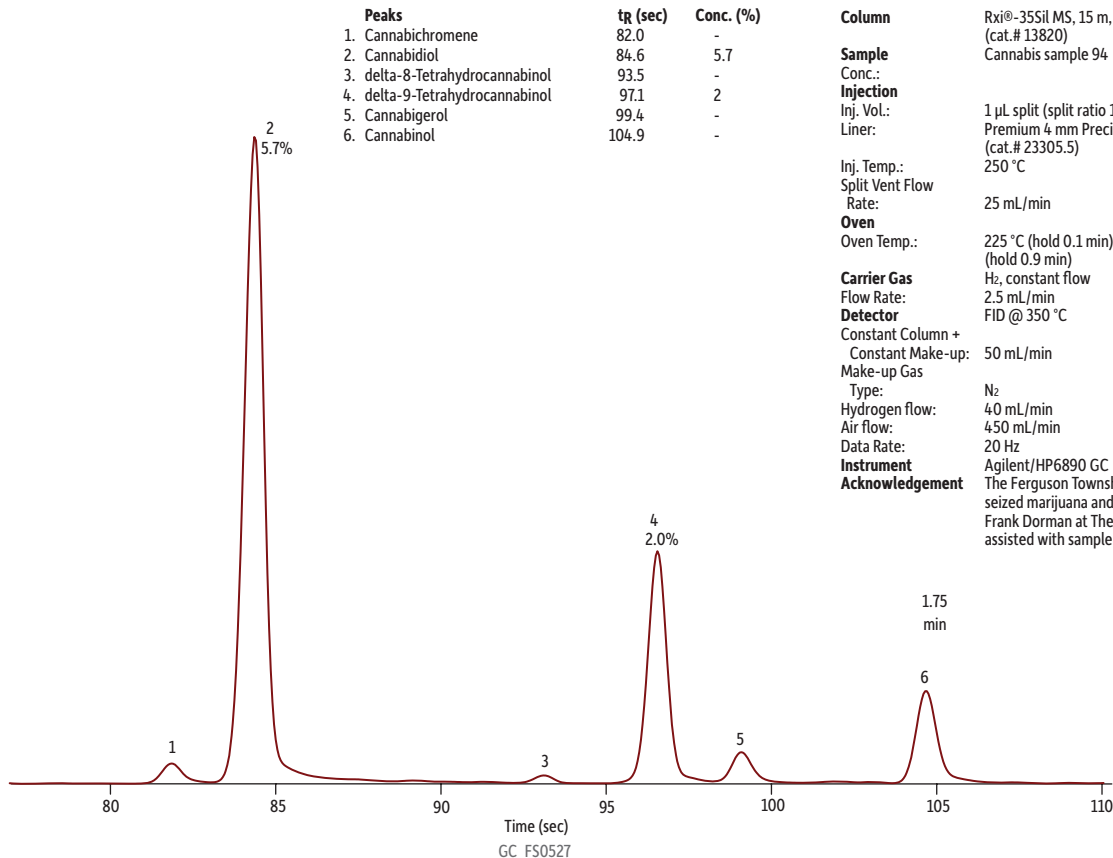


Cannabinoids in Cannabis Sample 94 on Rxi®-35Sil MS



Column Rxi®-35Sil MS, 15 m, 0.25 mm ID, 0.25 µm (cat.# 13820)
Sample Cannabis sample 94
Conc.:
Injection
Inj. Vol.: 1 µL split (split ratio 10:1)
Liner: Premium 4 mm Precision® liner w/wool (cat.# 23305.5)
Inj. Temp.: 250 °C
Split Vent Flow Rate: 25 mL/min
Oven
Oven Temp.: 225 °C (hold 0.1 min) to 330 °C at 35 °C/min (hold 0.9 min)
Carrier Gas H₂, constant flow
Flow Rate: 2.5 mL/min
Detector FID @ 350 °C
Constant Column + Constant Make-up: 50 mL/min
Make-up Gas Type: N₂
Hydrogen flow: 40 mL/min
Air flow: 450 mL/min
Data Rate: 20 Hz
Instrument Agilent/HP6890 GC
Acknowledgement The Ferguson Township Police Department supplied seized marijuana and oversaw sample handling. Frank Dorman at The Pennsylvania State University assisted with sample extraction.