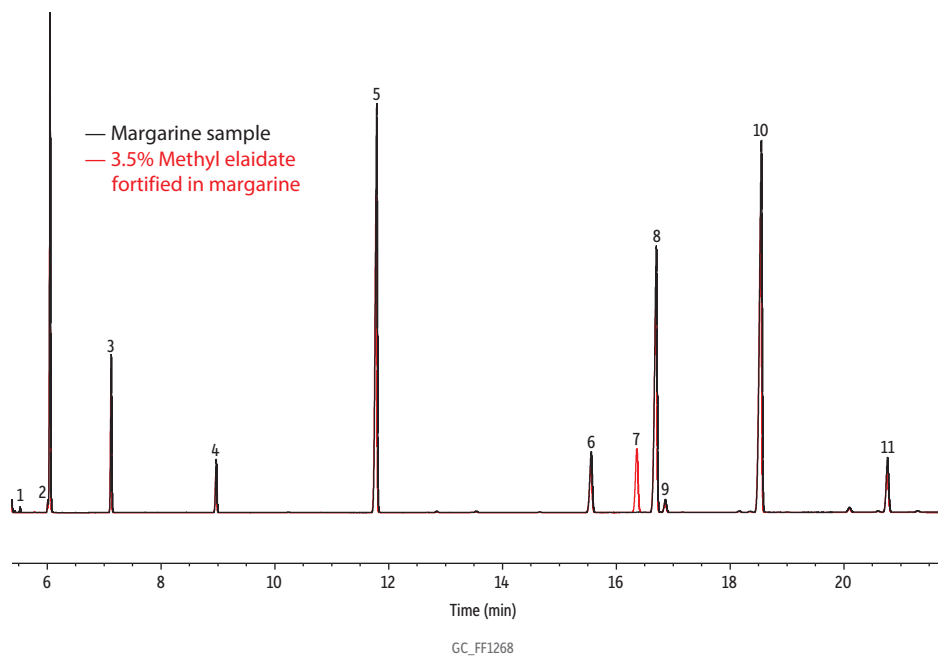


# Margarine on Rtx-2330



Peaks	tr (min)	Structural Nomenclature
1. Methyl octanoate	5.377	C8:0
2. Methyl decanoate	6.010	C10:0
3. Methyl laurate	7.123	C12:0
4. Methyl myristate	8.968	C14:0
5. Methyl palmitate	11.788	C16:0
6. Methyl stearate	15.557	C18:0
7. Methyl elaidate	16.364	C18:1 <i>trans</i> -9
8. Methyl oleate	16.701	C18:1 <i>cis</i> -9
9. Methyl vaccenate	16.861	C18:1 <i>cis</i> -11
10. Methyl linoleate	18.547	C18:2 <i>cis</i> -9,12
11. Methyl linolenate	20.764	C18:3 <i>cis</i> -9,12,15

**Column** Rtx-2330, 105 m, 0.25 mm ID, 0.20  $\mu$ m (cat.# 10729)  
**Sample** Margarine stick  
**Diluent:** Hexane  
**Injection**  
**Inj. Vol.:** 1  $\mu$ L split (split ratio 100:1)  
**Liner:** Topaz 4 mm ID straight inlet liner w/wool (cat.# 23300)  
**Inj. Temp.:** 250 °C  
**Oven**  
**Oven Temp.:** 160 °C to 250 °C at 2 °C/min (hold 5 min)  
**Carrier Gas** H<sub>2</sub>, constant flow  
**Flow Rate:** 2 mL/min  
**Detector** FID @ 250 °C  
**Instrument** Agilent 7890A GC  
**Notes** The sample was prepared using sodium methoxide.