

Cannabis Potency Compounds on Rxi®-5Sil MS

Peaks

1. Cannabidiol
2. Cannabichromene
3. delta-8-Tetrahydrocannabinol
4. delta-9-Tetrahydrocannabinol
5. Cannabigerol
6. Cannabinol

Column Rxi®-5Sil MS, 15 m, 0.25 mm ID, 0.25 µm (cat.# 13620)
Sample Cannabinoids standard (cat.# 34014)
Cannabichromene (cat.# 34092)
delta-8-Tetrahydrocannabinol (THC) (cat.# 34090)
Cannabigerol (cat.# 34091)

Injection

Inj. Vol.: 1 µL split (split ratio 50:1)
Liner: Sky® 4 mm Precision® liner w/wool (cat.# 23305.5)
Inj. Temp.: 250 °C

Oven

Oven Temp.: 150 °C (hold 0.1 min) to 330 °C at 25 °C/min (hold 0.7 min)

Carrier Gas

Flow Rate: H₂, constant flow
1.6 mL/min

Detector

FID @ 350 °C

Constant Column +

Constant Make-up: 50 mL/min

Make-up Gas

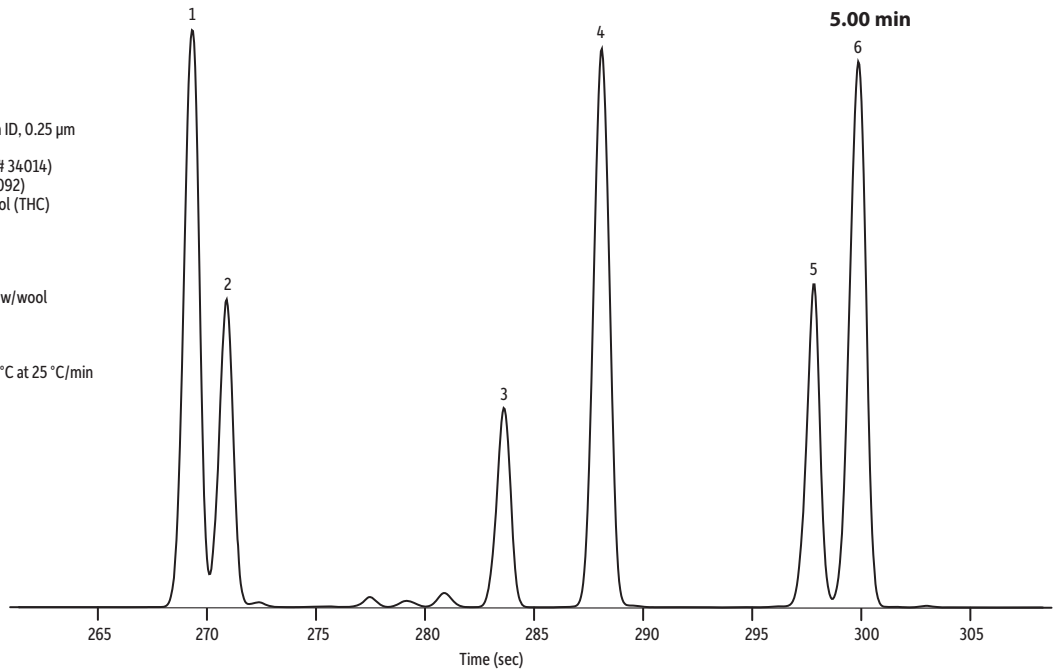
Type: N₂

Hydrogen flow: 40 mL/min

Air flow: 450 mL/min

Data Rate: 20 Hz

Instrument: Agilent/HP6890 GC



GC_FF1253

Restek Corporation 110 Benner Circle Bellefonte, PA 16823
1-814-353-1300 • 1-800-356-1688 • Fax: 1-814-353-1309 • www.restek.com