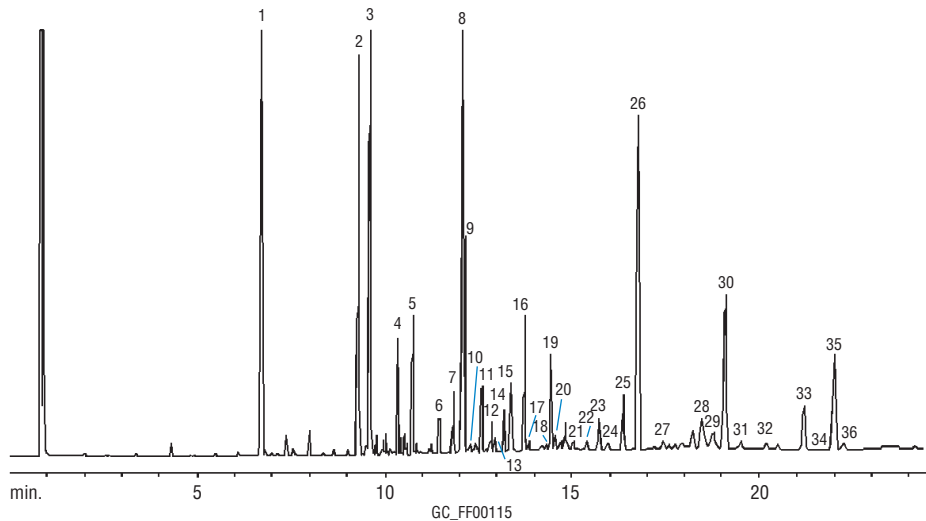


FAMEs
PUFA (menhaden source)
FAMEWAX™

(split injection)



1. C14:0
2. C16:0
3. C16:1n7
4. C16:2n4
5. C16:3n4
6. C16:4n1
7. C18:0
8. C18:1n9
9. C18:1n7
10. C18:1n5
11. C18:2n6
12. C18:2n4
13. C18:3n6
14. C18:3n4
15. C18:3n3
16. C18:4n3
17. C18:4n1
18. C20:1n15
19. C20:1n9
20. C20:1n7
21. C20:2n6
22. C20:3n6
23. C20:4n6
24. C20:3n3
25. C20:4n3
26. C20:5n3
27. C22:1n9
28. C22:2n6
29. C21:5n3
30. C23:0 (IS)
31. C22:4n6
32. C22:5n6
33. C22:5n3
34. C24:0
35. C22:6n3
36. C24:1n9

30m, 0.25mm ID, 0.25µm Famewax™ (cat.# 12497)
0.8µL split injection of menhaden oil
Conc.: 100–150ng.

Oven temp.: 120°C to 220°C @ 7°C/min. (hold 20 min.)
Inj. & det. temp.: 220°C
Carrier gas: helium
Linear velocity: 60cm/sec. set @ 120°C
FID sensitivity: 8 x 10⁻¹¹ AFS
Split ratio: 50:1