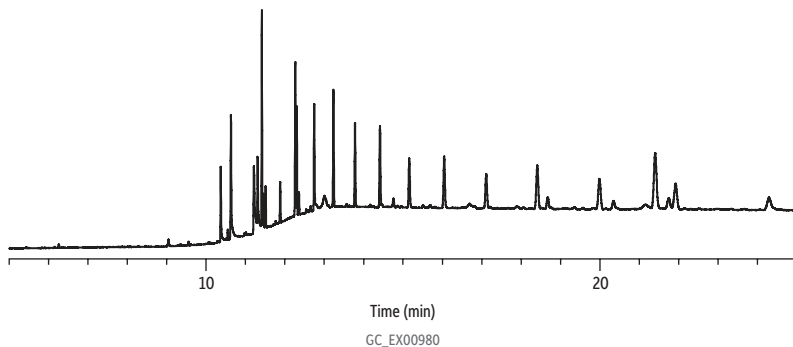


## Example of Vial Cap or Injection Port Septum Bleed



<b>Column</b>	Rtx-5MS, 30 m, 0.25 mm ID, 0.25 $\mu$ m (cat.# 12623)
<b>Sample</b>	Methylene chloride blank
<b>Injection</b>	
Inj. Vol.:	1.0 $\mu$ L split (split ratio 10:1)
Liner:	4.0 mm ID straight inlet liner w/wool (standard deactivation) (cat.# 20782)
Inj. Temp.:	240 °C
<b>Oven</b>	
Oven Temp.:	70 °C (hold 1 min) to 290 °C at 20 °C/min (hold 13 min)
<b>Carrier Gas</b>	He, constant flow
Flow Rate:	1.2 mL/min
<b>Detector</b>	FID @ 250 °C