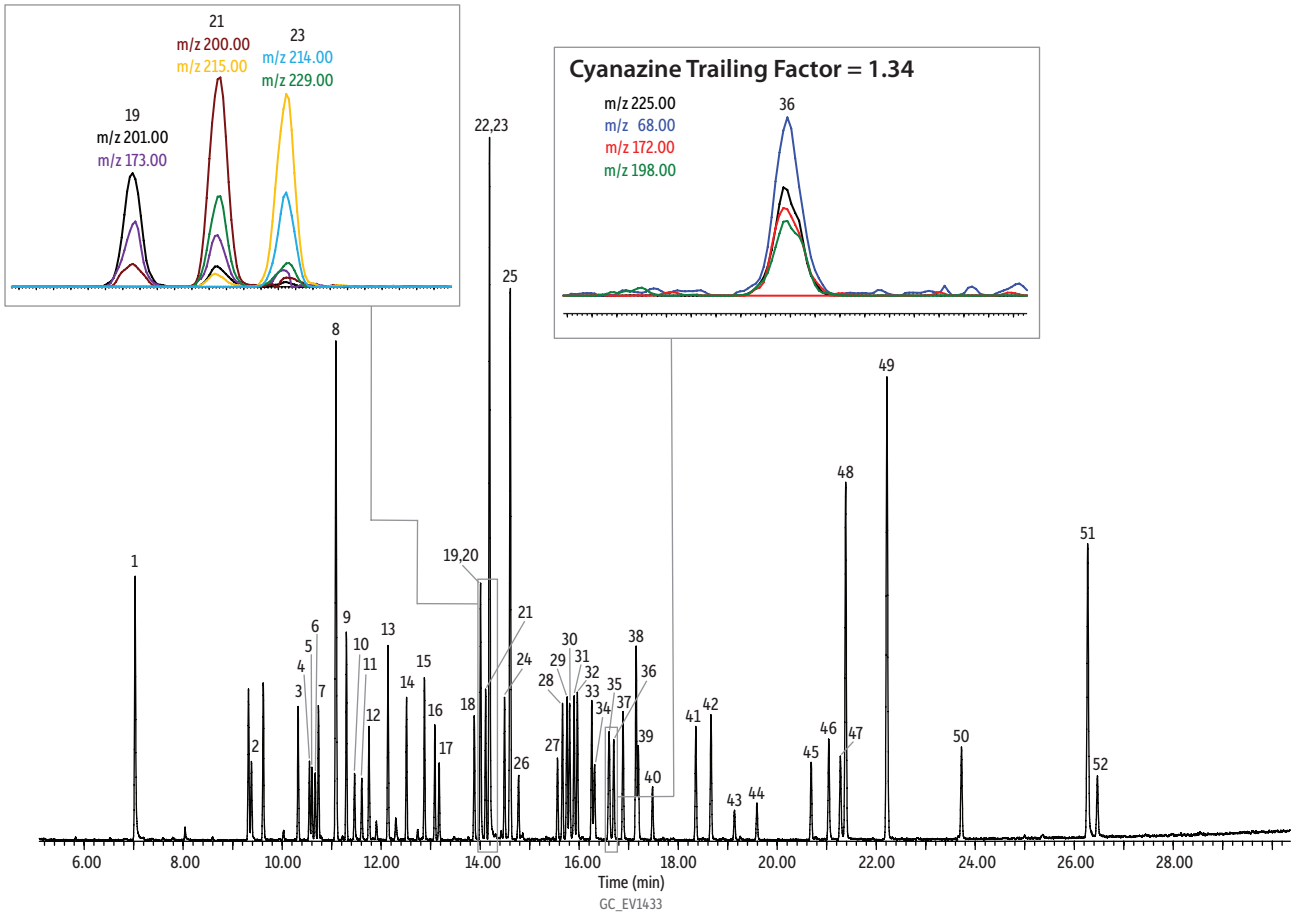


EPA Method 525.3 ONP Calibration Standard (with 525.3 Internal and Surrogate Standards) on the Rxi®-5Sil MS



Peaks	t _r (min)	Peaks	t _r (min)
1. 1,3-Dimethyl-2-nitrobenzene (SS)	7.03	27. Metribuzin	15.56
2. S-Ethyl dipropylthiocarbamate (EPTC)	9.38	28. Vinclozolin	15.66
3. Butylate	10.32	29. Alachlor	15.75
4. Vernolate	10.55	30. Simetryn	15.81
5. Etridiazole	10.60	31. Ametryn	15.90
6. 2,6-Dinitrotoluene	10.67	32. Prometryn	15.96
7. Pebulate	10.73	33. Terbutryn	16.25
8. Acenaphthene-D10 (IS)	11.08	34. Bromacil	16.31
9. Butylated hydroxytoluene (BHT)	11.30	35. Metolachlor	16.60
10. Tebuthiuron	11.46	36. Cyanazine	16.69
11. 2,4-Dinitrotoluene	11.61	37. Triadimefon	16.88
12. Molinate	11.75	38. Diphenamid	17.15
13. N,N-Diethyl-meta-toluamide (DEET)	12.14	39. MGK 264(a)	17.19
14. Propachlor	12.51	40. MGK 264(b)	17.48
15. Cycloate	12.87	41. Butachlor	18.36
16. Chlorpropham	13.09	42. Napropamide	18.66
17. Trifluralin	13.17	43. Oxyfluorfen	19.13
18. Atraton	13.88	44. Nitrofen	19.59
19. Simazine	14.01	45. Norflurazon	20.69
20. Prometon	14.01	46. Hexazinone	21.04
21. Atrazine	14.11	47. Tebuconazole	21.27
22. Pentachlorophenol-C13 (IS)	14.19	48. Triphenyl phosphate (SS)	21.38
23. Propazine	14.19	49. Chrysene-D12 (IS)	22.22
24. Pronamide (propyzamide)	14.49	50. Fenarimol	23.73
25. Phenanthrene-D10 (IS)	14.61	51. Benzo[a]pyrene-D12 (SS)	26.27
26. Terbacil	14.78	52. Fluridone	26.47

Column Rxi®-5Sil MS, 30 m, 0.25 mm ID, 0.25 µm (cat.# 13623)
Sample EPA Method 525.3 ONP cal standard (cat.# 32544)
 EPA Method 525.3 PAH IS mix (cat.# 32547)
 EPA Method 525.3 PCP IS (cat.# 32548)
 EPA Method 525.3 surrogate standard (cat.# 32549)
 Ethyl acetate
 2 µg/mL

Diluent:
Conc.:
Injection
 Inj. Vol.: 1 µL pulsed splitless (hold 1 min)
 Liner: Premium 4 mm single taper w/wool (cat.# 23303.1)
 Inj. Temp.: 275 °C
 Pulse Pressure: 30 psi (206.8kPa)
 Pulse Time: 1 min
 Purge Flow: 80 mL/min

Oven
 Oven Temp.: 70 °C (hold 1 min) to 200 °C at 10 °C/min to 320 °C at 7 °C/min (hold 3 min)
Carrier Gas
 Flow Rate: He, constant flow
 1.2 mL/min

Detector
 MS
 Mode: Scan
 Scan Program:

Goup	Start Time (min)	Scan Range (amu)	Scan Rate (scans/sec)
1	5	45-550	5.5

Transfer Line
 Temp.: 280 °C
Analyzer Type: Quadrupole
Source Type: Extractor
Source Temp.: 350 °C
Quad Temp.: 200 °C

Solvent Delay
 Time: 5 min
Tune Type: DFTPP
Ionization Mode: EI
Instrument Agilent 7890B GC & 5977A MSD