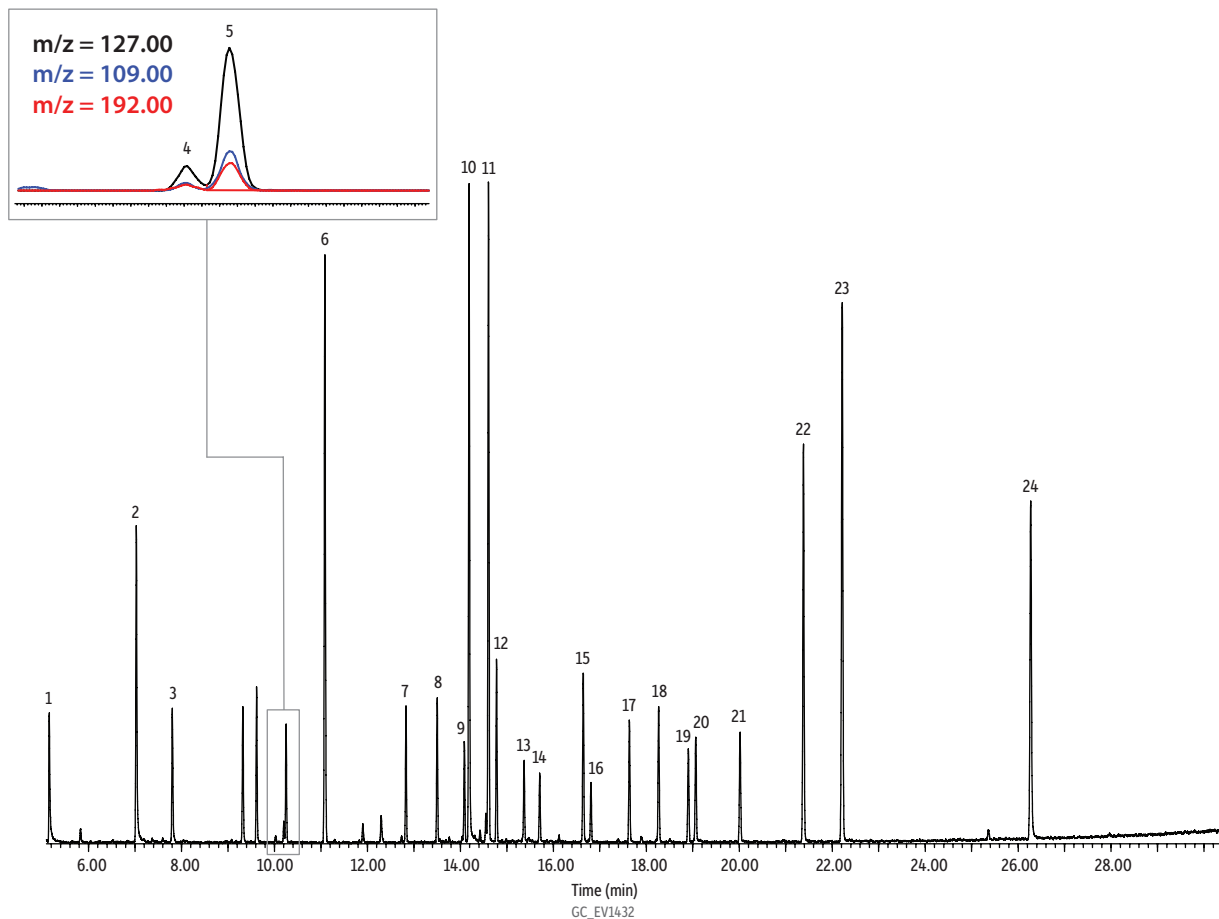


EPA Method 525.3 OPP Calibration Standard (with 525.3 Internal and Surrogate Standards) on Rxi®-5Sil MS



Peaks	t_R (min)
1. Diisopropyl methylphosphonate (DIMP)	5.16
2. 1,3-Dimethyl-2-nitrobenzene (SS)	7.03
3. Dichlorvos	7.80
4. Mevinphos I	10.20
5. Mevinphos II	10.25
6. Acenaphthene-D10 (IS)	11.08
7. Ethoprop	12.83
8. Phorate	13.50
9. Dimethipin	14.09
10. Pentachlorophenol-C13 (IS)	14.19
11. Phenanthrene-D10 (IS)	14.60
12. Disulfoton	14.78
13. Phosphamidon	15.37
14. Methyl parathion	15.71
15. Chlorpyrifos	16.65
16. Ethyl parathion	16.81
17. Chlorfenvinphos	17.64
18. Tetrachlorvinphos	18.27
19. Profenofos	18.91
20. Tribufos (+merphos)	19.06
21. Ethion	20.02
22. Triphenyl phosphate (SS)	21.38
23. Chrysene-D12 (IS)	22.21
24. Benzo[a]pyrene-D12 (SS)	26.27

Column	Rxi®-5Sil MS, 30 m, 0.25 mm ID, 0.25 μ m (cat.# 13623)		
Sample	EPA Method 525.3 OPP cal standard (cat.# 32543) EPA Method 525.3 PAH IS mix (cat.# 32547) EPA Method 525.3 PCP IS (cat.# 32548) EPA Method 525.3 surrogate standard (cat.# 32549)		
Diluent:	Ethyl acetate		
Conc.:	2 μ g/mL		
Injection			
Inj. Vol.:	1 μ L pulsed splitless (hold 1 min)		
Liner:	Premium 4 mm single taper w/wool (cat.# 23303.1)		
Inj. Temp.:	275 °C		
Pulse Pressure:	30 psi (206.8kPa)		
Pulse Time:	1 min		
Purge Flow:	80 mL/min		
Oven			
Oven Temp.:	70 °C (hold 1 min) to 200 °C at 10 °C/min to 320 °C at 7 °C/min (hold 3 min)		
Carrier Gas	He, constant flow		
Flow Rate:	1.2 mL/min		
Detector	MS		
Mode:	Scan		
Scan Program:			
	Start Time	Scan Range	Scan Rate
Goup	(min)	(amu)	(scans/sec)
1	5	45-550	5.5
Transfer Line			
Temp.:	280 °C		
Analyzer Type:	Quadrupole		
Source Type:	Extractor		
Extractor Lens:	6 mm ID		
Source Temp.:	350 °C		
Quad Temp.:	200 °C		
Solvent Delay			
Time:	5 min		
Tune Type:	DFTPP		
Ionization Mode:	El		
Instrument	Agilent 7890B GC & 5977A MSD		