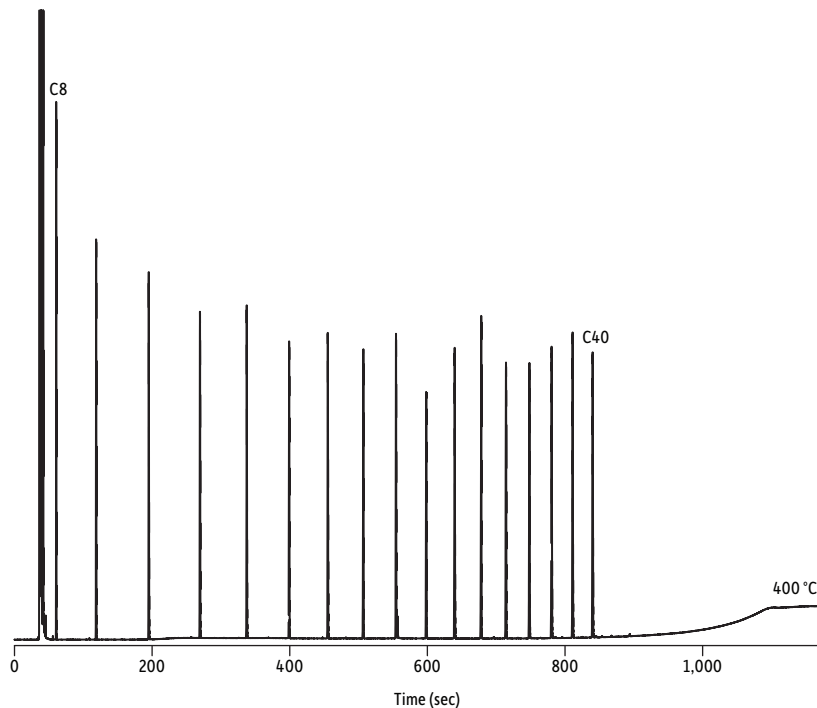


Florida TRPH Standard on Rxi®-1HT (15 m x 0.25 mm x 0.10 µm)



GC_EV1362

| Peaks | tr (sec) | Peaks | tr (sec) |
|--------|----------|---------|----------|
| 1. C8 | 60.7 | 10. C26 | 598.3 |
| 2. C10 | 118.7 | 11. C28 | 639.7 |
| 3. C12 | 195.2 | 12. C30 | 678.3 |
| 4. C14 | 269.6 | 13. C32 | 714.3 |
| 5. C16 | 337.6 | 14. C34 | 748.3 |
| 6. C18 | 399.2 | 15. C36 | 780.5 |
| 7. C20 | 455.3 | 16. C38 | 811.1 |
| 8. C22 | 507.0 | 17. C40 | 840.2 |
| 9. C24 | 554.5 | | |

Column Rxi®-1HT, 15 m, 0.25 mm ID, 0.10 µm (cat.# 13950)
Sample Florida TRPH standard (cat.# 31266)
Diluent: Hexane
Conc.: 500 ng/µL
Injection
Inj. Vol.: 1 µL split (split ratio 250:1)
Liner: Premium 4 mm Precision liner w/wool (cat.# 23305.5)
Inj. Temp.: 275 °C
Split Vent
Flow Rate: 437.5 mL/min
Oven
Oven Temp.: 40 °C (hold 0.1 min) to 400 °C at 20 °C/min (hold 1.9 min)
Carrier Gas
H₂ constant flow
Flow Rate: 1.75 mL/min
Detector
FID @ 420 °C
Constant Column +
Constant Make-up: 50 mL/min
Make-up Gas Type: N₂
Hydrogen flow: 40 mL/min
Air flow: 450 mL/min
Data Rate: 20 Hz
Instrument
Agilent/HP6890 GC
Note Actual column length was calculated to be 15.7 m using holdup time and EZGC® flow calculator (<http://www.restek.com/ezgc-mtfc>).