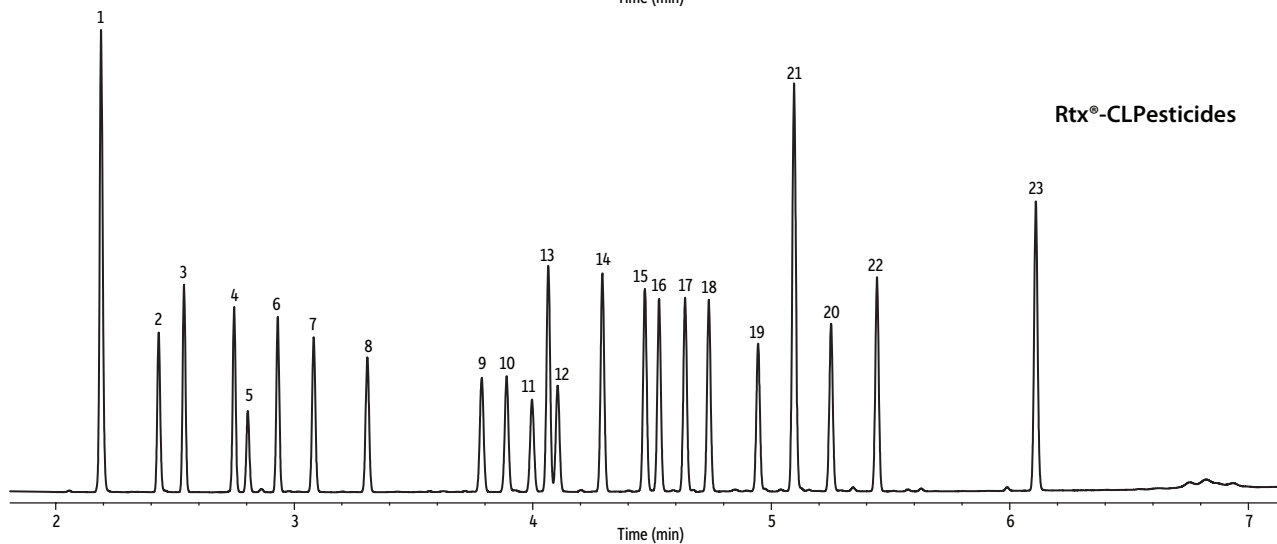
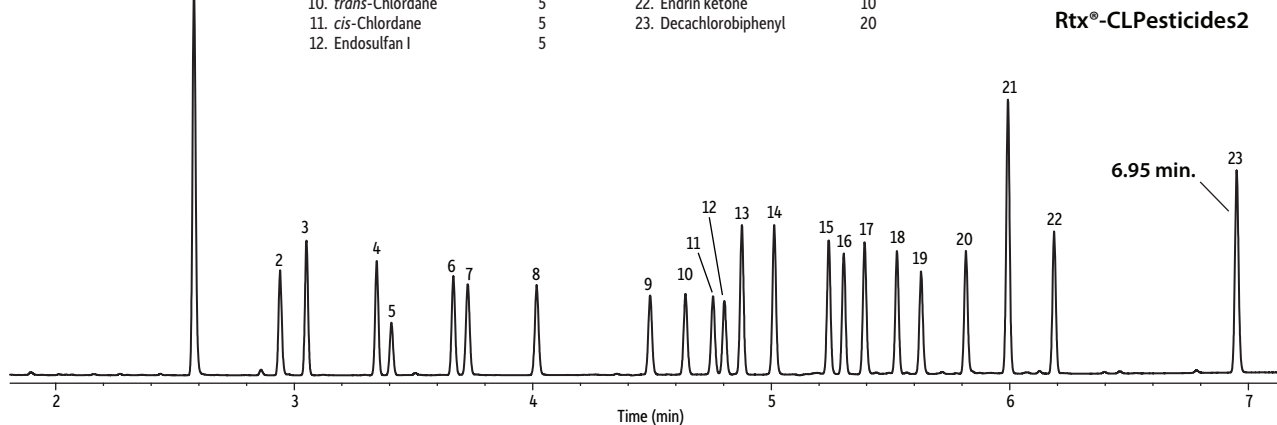


# 7-Minute Analysis of Organochlorine Pesticides (EPA Method 8081) on Rtx<sup>®</sup>-CLPesticides and Rtx<sup>®</sup>-CLPesticides2 Using Helium

Peaks	Conc. (µg/mL)	Peaks	Conc. (µg/mL)
1. Tetrachloro- <i>m</i> -xylene	20	13. 4,4'-DDE	10
2. Hexachlorobenzene	5	14. Dieldrin	10
3. $\alpha$ -BHC	5	15. Endrin	10
4. $\gamma$ -BHC	5	16. 4,4'-DDD	10
5. $\beta$ -BHC	5	17. Endosulfan II	10
6. $\delta$ -BHC	5	18. 4,4'-DDT	10
7. Heptachlor	5	19. Endrin aldehyde	10
8. Aldrin	5	20. Endosulfan sulfate	10
9. Heptachlor epoxide	5	21. Methoxychlor	50
10. <i>trans</i> -Chlordane	5	22. Endrin ketone	10
11. <i>cis</i> -Chlordane	5	23. Decachlorobiphenyl	20
12. Endosulfan I	5		



GC\_EV1323

**Columns**

Rtx<sup>®</sup>-CLPesticides2 30 m, 0.32 mm ID, 0.25 µm (cat.# 11324) and Rtx<sup>®</sup>-CLPesticides 30 m, 0.32 mm ID, 0.32 µm (cat.# 11141) using Rxi<sup>®</sup> guard column 5 m, 0.32 mm ID (cat.# 10039) with universal "Y" Press-Tight<sup>®</sup> connector (cat.# 20406-261) Organochlorine pesticide mix AB #2 (cat.# 32292) Hexachlorobenzene (cat.# 32231) 2,4,5,6-Tetrachloro-*m*-xylene (cat.# 32027) Decachlorobiphenyl (BZ #209) (cat.# 32029) *n*-Hexane

**Sample**

Diluent:  
Injection  
Inj. Vol.:  
Liner:  
Inj. Temp.:  
Purge Flow:

2 µL splitless (hold 0.3 min)  
Premium 4 mm single taper w/wool (cat.# 23303.5)  
250 °C  
50 mL/min

**Oven**

Oven Temp.: 120 °C to 200 °C at 45 °C/min to 230 °C at 15 °C/min to 330 °C at 30 °C/min (hold 2 min)  
**Carrier Gas**  
Linear Velocity: He, constant flow  
71 cm/sec  
**Detector**  
Micro-ECD @ 340 °C  
Make-up Gas Flow Rate: 50 mL/min  
Make-up Gas Type: N<sub>2</sub>  
Data Rate: 50 Hz  
**Instrument**  
Agilent/HP6890 GC