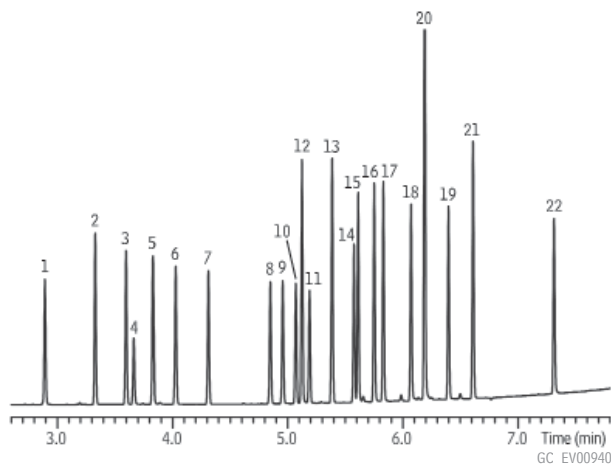
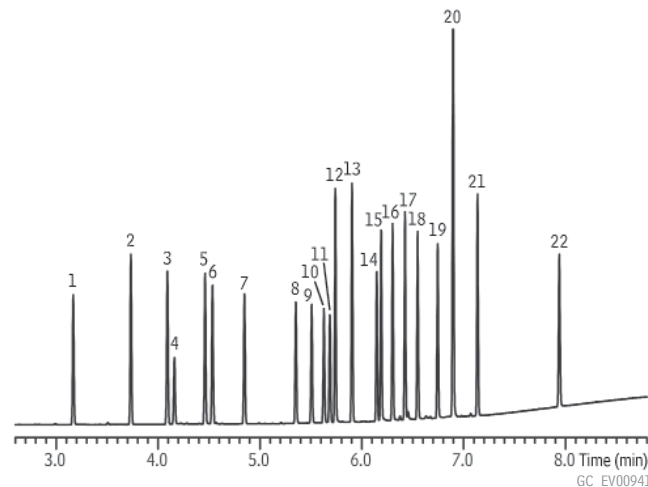


## Organochlorine Pesticide Mix AB #2 Rtx®-CLPesticides and Rtx®-CLPesticides2 (0.25mm ID column set)

### Rtx®-CLPesticides



### Rtx®-CLPesticides2



**Columns** Rtx®-CLPesticides 30 m, 0.25 mm ID, 0.25 µm (cat.# 11123)  
and Rtx®-CLPesticides2 30 m, 0.25 mm ID, 0.20 µm (cat.# 11323)  
using Rxi® guard column 5 m, 0.25 mm ID (cat.# 10029)  
with Siltek®-treated universal “Y” Press-Tight® connector (cat.# 20486)

**Sample** Organochlorine pesticide mix AB #2 (cat.# 32292)  
Pesticide surrogate mix, EPA 8080, 8081 (cat.# 32000)

**Injection**  
Inj. Vol.: 0.5 µL splitless (hold 0.5 min)  
Liner: Cyclo double taper (2 mm) (cat.# 20908)  
Inj. Temp.: 250 °C

**Oven**  
Oven Temp.: 125 °C to 200 °C at 45 °C/min to 230 °C at 12.5 °C/min to 330 °C at 30 °C/min (hold 2 min)

**Carrier Gas**  
He, constant linear velocity  
Linear Velocity: 41 cm/sec @ 125 °C

**Detector**  
ECD @ 330 °C

**Notes**  
This chromatogram was obtained using an Agilent µ-ECD. To obtain comparable results, you will need to employ a µ-ECD in addition to dual columns connected to a 5-meter guard column using a “Y” Press-Tight® connector.

Peaks	Peaks
1. 2,4,5,6-tetrachloro-m-xylene (SS)	12. 4,4'-DDE
2. α-BHC	13. Dieldrin
3. γ-BHC	14. Endrin
4. β-BHC	15. 4,4'-DDD
5. δ-BHC	16. Endosulfan II
6. Heptachlor	17. 4,4'-DDT
7. Aldrin	18. Endrin aldehyde
8. Heptachlor epoxide (isomer B)	19. Endosulfan sulfate
9. <i>trans</i> -Chlordane*	20. Methoxychlor
10. <i>cis</i> -Chlordane*	21. Endrin ketone
11. Endosulfan I	22. decachlorobiphenyl (SS)

\* For information regarding the nomenclature used for *cis*-chlordane and *trans*-chlordane, visit [www.restek.com/chlordane-notice](http://www.restek.com/chlordane-notice)