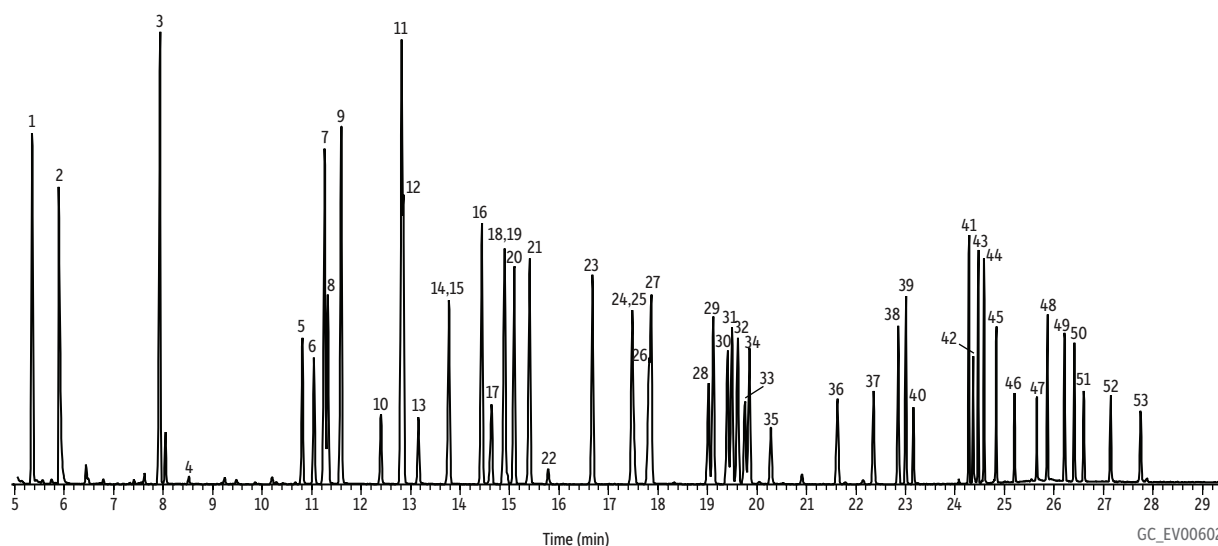


Organophosphorus Pesticides U.S. EPA Method 8141A on Rtx®-OPPesticides2

Peaks		
1. Dichlorvos	18. Dioxathion	36. Chlorfenvinphos
2. Hexamethylphosphoramide	19. Fonophos	37. Crotoxyphos
3. Mevinphos	20. Diazinon	38. Stirofos
4. Trichlorfon	21. Disulfoton	39. Prothiofos
5. TEPP	22. Phosphamidon isomer	40. Merphos oxone (breakdown product)
6. Demeton- <i>o</i>	23. Dichlorofenthion	41. Ethion
7. Thionazin	24. Chlorpyrifos methyl	42. Fensulfothion
8. Tributyl phosphate (IS)	25. Phosphamidon	43. Sulprofos
9. Ethoprop	26. Methyl parathion	44. Carbophenothion
10. Naled	27. Ronnel	45. Famphur
11. Sulfotepp	28. Fenitrothion	46. Triphenyl phosphate (SS)
12. Phorate	29. Aspon	47. Epn
13. Dicrotophos	30. Malathion	48. Phosmet
14. Demeton-S	31. Chlorpyrifos	49. Leptophos
15. Monocrotophos	32. Trichloronate	50. Tri- <i>o</i> -cresyl phosphate
16. Terbufos	33. Parathion-ethyl	51. Azinphos-methyl
17. Dimethoate	34. Fenthion	52. Azinphos-ethyl
	35. Merphos	53. Coumaphos



Column Rtx®-OPPesticides2, 30 m, 0.25 mm ID, 0.25 µm (cat.# 11243)
Sample Triphenylphosphate (cat.# 32281)
 Tributylphosphate (cat.# 32280)
 8140/8141 OP pesticide calibration mix A (cat.# 32277)
 8141 OP pesticide calibration mix B (cat.# 32278)
Conc.: 100 ppm (100 ng on-column)
Injection
 Inj. Vol.: 1.0 µL splitless (hold 0.4 min)
 Liner: Double taper splitless (4 mm) (cat.# 20785)
 Inj. Temp.: 250 °C
Oven
 Oven Temp.: 80 °C (hold 0.5 min) to 140 °C at 20 °C/min to 210 °C at 4 °C/min (hold 1 min) to 280 °C at 30 °C/min (hold 5 min)
Carrier Gas He, constant flow
Flow Rate: 1.0 mL/min
Detector MS
 Mode: Scan
 Transfer Line Temp.: 280 °C
 Analyzer Type: Quadrupole
 Ionization Mode: EI
 Scan Range: 35-400 amu
Notes U.S. EPA Method 8141A custom standard mix. Additional mixes not shown. Contact Restek for more information.