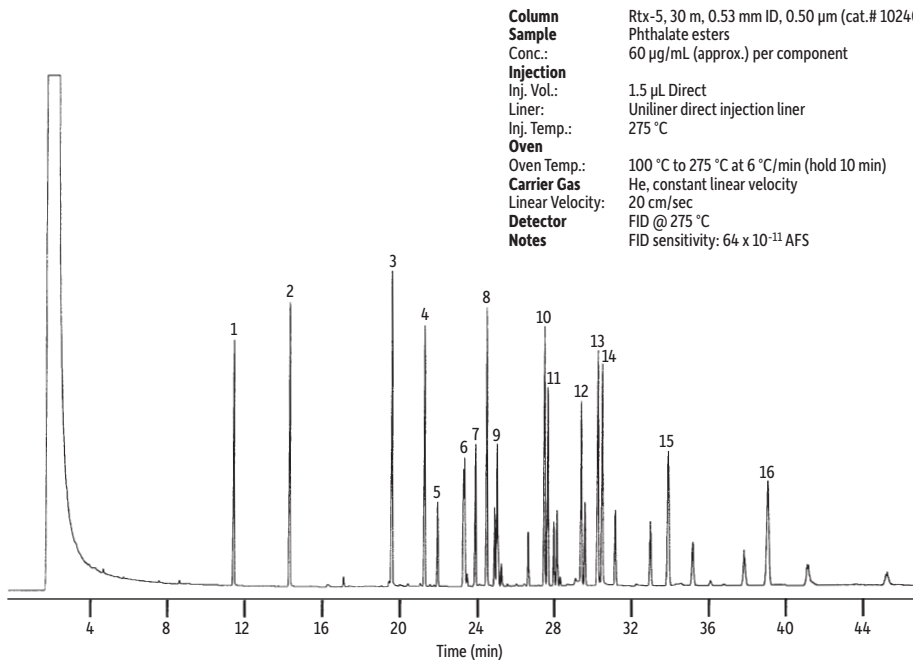


EPA Method 8060 Phthalate Esters on Rtx-5 (Direct Injection)

Peaks

1. Dimethyl phthalate
2. Diethyl phthalate
3. Diisobutyl phthalate
4. di-*n*-Butyl phthalate
5. Bis(methoxyethyl) phthalate
6. Bis[4-methyl-2-pentyl]phthalate
7. Bis(ethoxyethyl)phthalate
8. Diamyl phthalate
9. Hexyl-2-ethylhexyl phthalate
10. di-*n*-Hexyl phthalate
11. Butyl benzyl phthalate
12. Bis[2-*n*-butoxyethyl]phthalate
13. Dicyclohexyl phthalate
14. Bis(2-ethylhexyl) phthalate
15. di-*n*-Octyl phthalate
16. Dinonyl phthalate



Column Rtx-5, 30 m, 0.53 mm ID, 0.50 μ m (cat.# 10240)
Sample Phthalate esters
Conc.: 60 μ g/mL (approx.) per component
Injection
Inj. Vol.: 1.5 μ L Direct
Liner: Uniliner direct injection liner
Inj. Temp.: 275 $^{\circ}$ C
Oven
Oven Temp.: 100 $^{\circ}$ C to 275 $^{\circ}$ C at 6 $^{\circ}$ C/min (hold 10 min)
Carrier Gas He, constant linear velocity
Linear Velocity: 20 cm/sec
Detector FID @ 275 $^{\circ}$ C
Notes FID sensitivity: 64×10^{-11} AFS

GC_EV00036



© 2017 Restek Corporation. All rights reserved.
www.restek.com

Restek patents and trademarks are the property of Restek Corporation. (See www.restek.com/Patents-Trademarks for full list.) Other trademarks in Restek literature or on its website are the property of their respective owners. Restek registered trademarks are registered in the U.S. and may also be registered in other countries.