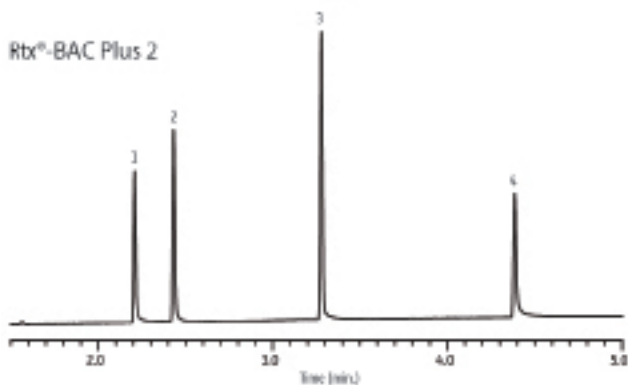
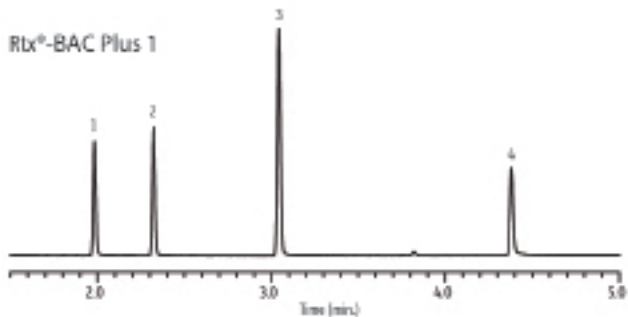


Glycols on Rtx[®]-BAC Plus 1 and 2 Column Set



Peaks	BAC Plus 1 RT (min.)	BAC Plus 2 RT (min.)
1. Ethylene glycol	1.983	2.207
2. Propylene glycol	2.323	2.433
3. 1,3-Propanediol	3.043	3.278
4. Diethylene glycol	4.380	4.385

Columns Rtx[®]-BAC Plus 130 m, 0.32 mm ID, 1.8 μ m (cat.# 18004) and Rtx[®]-BAC Plus 2 30 m, 0.32 mm ID, 0.6 μ m (cat.# 18006) using Rxi[®] guard column 5 m, 0.32 mm ID (cat.# 10039) with Universal "Y" Press-Tight[®] connector (cat.# 20405-261)

Sample

Diluent: Methanol:water (40:60)
 Conc.: 200 μ g/mL each glycol

Injection

Inj. Vol.: 1 μ L split (split ratio 20:1)
 Liner: Premium 4 mm straight inlet liner w/wool (cat.# 23300.1)
 Inj. Temp.: 260 $^{\circ}$ C

Oven

Oven Temp: 60 $^{\circ}$ C (hold 0 min.) to 240 $^{\circ}$ C at 20 $^{\circ}$ C/min. (hold 5 min.)

Carrier Gas He, constant flow

Linear Velocity: 70 cm/sec.

Detector FID @ 240 $^{\circ}$ C

Make-up Gas

Flow Rate: 30 mL/min.

Make-up Gas

Type:

N₂ Agilent/HP6890 GC

Instrument

Notes

The Rtx[®]-BAC Plus 1 and Plus 2 columns were connected to the injection port using a ~12 inch section of guard column between the injection port and the Universal Y Press-Tight[®] connector.

Injections were performed manually with a Merlin Microshot injector (cat.# 22229).

GC_CF1163