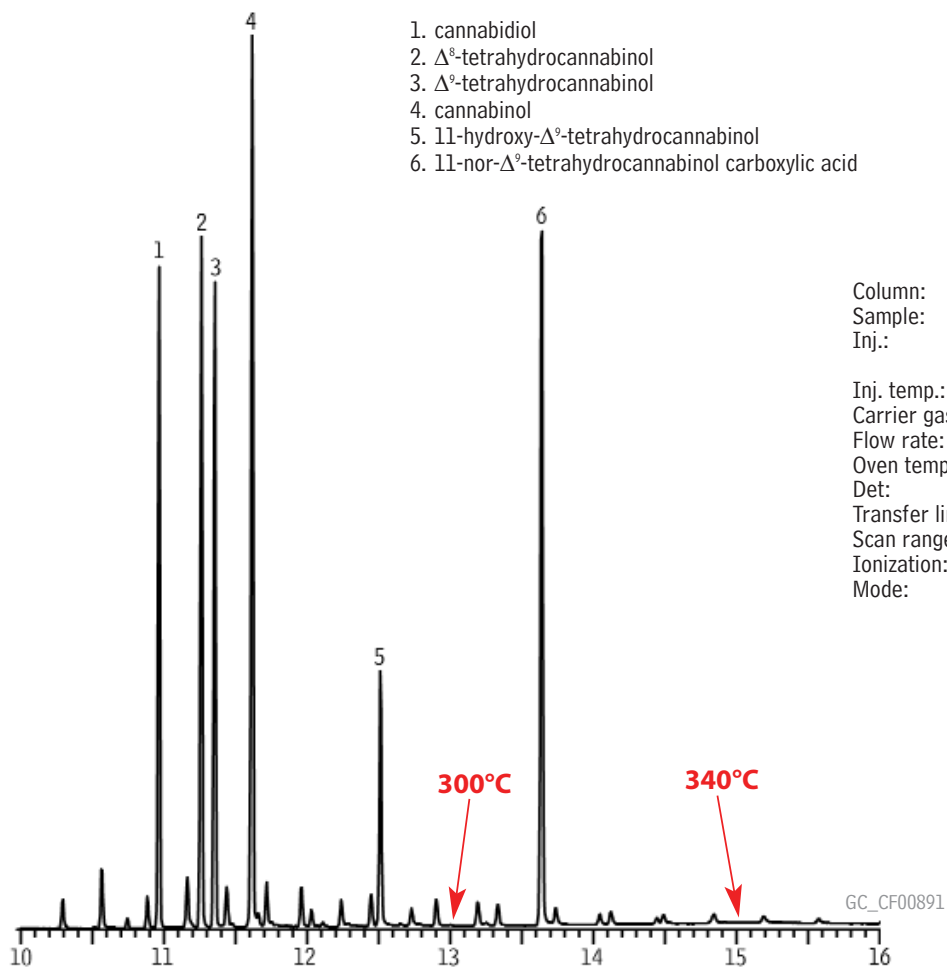


Cannabinoids Rxi-5ms



Rxi Technology!

Column: Rxi-5ms, 12m, 0.20mm ID, 0.33 μ m (cat.# 13497)
Sample: 1000 μ g/mL each component in methanol
Inj.: 1.0 μ L, split, split ratio 25:1, 4mm ID base-deactivated single gooseneck inlet liner w/wool (cat.# 20798-211.1)
Inj. temp.: 250°C
Carrier gas: helium, constant flow
Flow rate: 1mL/min.
Oven temp.: 40°C to 340°C @ 20°C/min. (hold 5 min.)
Det: MS
Transfer line temp.: 280°C
Scan range: 100-550amu
Ionization: EI
Mode: scan